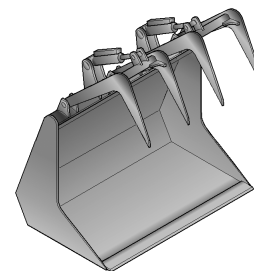


I DOTAZIONE STANDARD


PINZA INDUSTRIALE con numero 2 mordenti superiori indipendenti idraulici, tubazioni in gomma per alimentazione circuito idraulico, kit di attacco universale per Skid - Steer Loader.

GB STANDARD EQUIPMENT


INDUSTRIAL PLIERS with 2 independents hydraulic superior bitings, rubber pipes for hydraulic circuit, universal attack kit for Skid - Steer Loader.




PI 125

		CODICE CODE		PREZZO PRICE
BOB - CAT S100 KOMATSU SK510 GEHL SL3840 MUSTANG 2026 THOMAS T105 NEUSON 501S EUROCOMACH ESK130 CAMS LIBRA 635 	LARGHEZZA WIDTH	mm 1250	125.PI.100	(1) € 2.750,00
	PESO WEIGHT	Kg 240		

PI 140

		CODICE CODE		PREZZO PRICE
NEW HOLLAND LS140 GEHL SL3840 - SL4240 JCB-ROBOT 160 MUSTANG 2026 - 2041 THOMAS T105 	LARGHEZZA WIDTH	mm 1400	140.PI.100	(1) € 2.900,00
	PESO WEIGHT	Kg 275		


PI 155

		CODICE CODE		PREZZO PRICE
CAT 216B - 226B - 232B BOB - CAT S130 - S150 - S160 KOMATSU SK714 NEW HOLLAND LS150 GEHL SL4240 JCB-ROBOT 160 - 170 - 1CX CASE 410 - 420 MUSTANG 2041 - 2044 - 2054 THOMAS T153 NEUSON 701S DOOSAN 430 - 440 TAKEUCHI TL120 EUROCOMACH ESK150.4 CAMS LIBRA 755 	LARGHEZZA WIDTH	mm 1550	155.PI.100	(1) € 3.100,00
	PESO WEIGHT	Kg 300		


PI 168

		CODICE CODE		PREZZO PRICE
CAT 236B - 242B - 246B - 247B - 248B - 257B BOB - CAT S150 - S160 - S175 - S185 - T190 KOMATSU SK815 - SK818 - SK820 - CK20 - CK25 NEW HOLLAND LS160 - LS170 GEHL SL4640 - SL4840 JCB-ROBOT T180 CASE 430 - 440 MUSTANG 2076 DOOSAN 440 - 450 - 460 TAKEUCHI TL130 EUROCOMACH ETL160.4 CAMS LIBRA 865 - T865 	LARGHEZZA WIDTH	mm 1680	168.PI.100	(1) € 3.200,00
	PESO WEIGHT	Kg 320		

PI 185

		CODICE CODE		PREZZO PRICE
CAT 247B - 248B - 257B - 262B - 268B - 277B BOB - CAT S220 - S250 - S300 KOMATSU SK818 - SK820 - SK1020 - SK1026 - CK20 - CK25 NEW HOLLAND L175 - C175 - LS180B - LS185B GEHL SL5640 - SL6640 JCB-ROBOT 190 - T190 - 1110 CASE 435 - 445 - 440 CT THOMAS T175 - T205 - T255 NEUSON 901S DOOSAN 460 TAKEUCHI TL140 CAMS LIBRA 985 	LARGHEZZA WIDTH	mm 1850	185.PI.100	(1) € 3.400,00
	PESO WEIGHT	Kg 350		

PI 205

		CODICE CODE		PREZZO PRICE
CAT 277B - 287B - 297C BOB - CAT T250 - T300 KOMATSU SK1020 - SK1026 - CK30 - CK35 NEW HOLLAND C185 GEHL 7810 JCB-ROBOT T1110 MUSTANG 2109 NEUSON 1101C TAKEUCHI TL140 - TL150 	LARGHEZZA WIDTH	mm 2050	205.PI.100	(1) € 4.300,00
	PESO WEIGHT	Kg 495		

(1) Per minipale con piastra di attacco non universale : +€180,00
For skid-steer loader with attack plate not universal : + €180,00